

# Chaplaincy



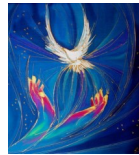
## Creating an Inclusive Catholic School Community

We are all unique human beings made in the image of God and are blessed, gifted, and loved by God.

*"For as in one body we have many members, and not all the members have the same function, so we, who are many, are one body in Christ, and individually we are members one*

*of another. We have gifts that differ according to the grace given to us."* (St. Paul's Letter to the Romans 12:4-6)

This passage is about using the gifts, talents and opportunities that God has given us. We are all interconnected to one another in Christ and we are called to use our unique gifts to work together for the betterment of each other and our community. Christ loves each one of us! Diversity in unity goes together. We have unity in diversity in being the living Body of Christ.



Chaplaincy is the ministry of presence among God's people.

**The role of the chaplaincy leader is to ensure that the pastoral needs of the school community are being met.**

Students are encouraged by the chaplaincy leader to take initiative and are provided opportunities and retreats to develop Christian leadership, also teachers and staff are encouraged to lead the school's pastoral and liturgical activities and to lead the individual ministries. Communication is facilitated by the chaplaincy leader between various interests in the community-staff, students, parish, administration, school council, diocese, youth office, etc., and celebrating diversity within the school's population. The chaplaincy leader also assumes leadership for the prayer life of the school community, preparing and leading prayer services for gatherings of the school community; organizing and preparing for the Celebration of the Eucharist (Mass) and prayer services.

The school's student retreat program is overseen by the chaplaincy leader who is also responsible for developing and facilitating retreats and staff faith formation. Being available as a pastoral resource to students and staff who wish support in their spiritual lives or who need comfort and pastoral support because of personal crisis and grief support and bereavement is a very important part of the ministry of chaplaincy as well as being available as a resource in the event of serious illness, death or tragedy. The chaplaincy leader endeavours to foster and encourage in the school an awareness of our call as Christians to serve, encouraging the creation (or continuation) of several volunteer service programs in the school.



## School Mission Statement

"Assumption College School is our catholic learning community where we strive for excellence and we work to become respectful, responsible individuals who are ready to serve our world In the Spirit of Christ."